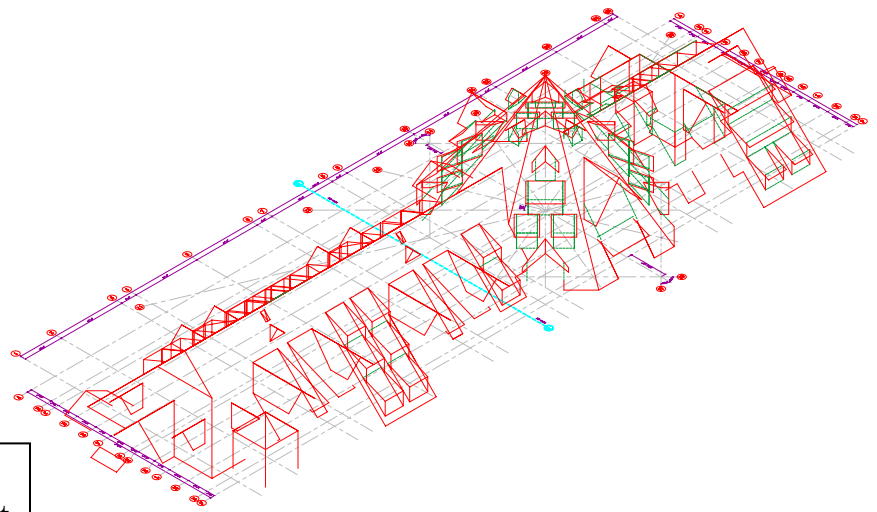


**Horizon Pass Lodge  
Avon, CO  
2003**

Owner: East - West Partners  
Architect: 42 | 40 Architecture  
Contractor: RA Nelson



**Description**

Russel Martino was the Project Manager / Project Engineer on this composite steel and precast concrete mountain resort. The building is composed of six stories above ground totaling over 100,000 square feet of living space, over an underground precast parking garage.

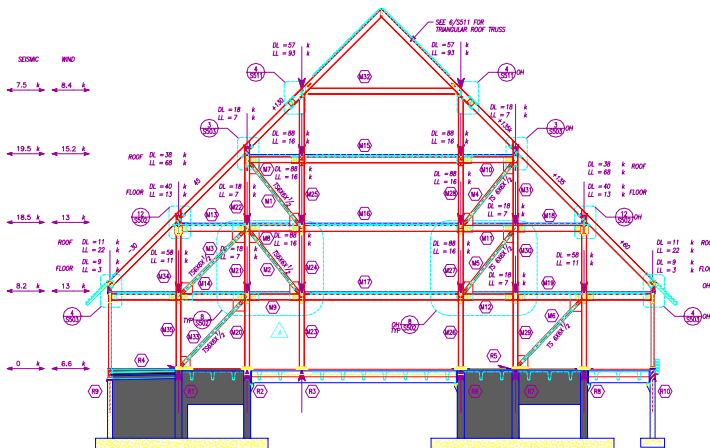
**Three Dimensional Drafting**

The complex hip and valley roof had to be drawn in three dimensions (above) in order to figure out deck bearing points and steel elevations. This information was then transferred to two dimensional section and elevation drawings for coordination with the architect and later for accurate information to the steel detailers.



**Hip Girders**

The W24x104 girders that form the hips of the octagonal central portion of the building shoot up into the air at a 51 degree angle and collide into an 18" diameter steel pipe over 100'-0" above the ground. This creates the focal point of the building, the Hogan.



**Leaning column**

The floor to floor heights of the structure limited beams to 12" deep and girders to 18" deep. To accomplish this, there was a different column spacing in the garage then there was above it. To limit the depth of the precast beam in the garage ceiling beneath the transferred column, a leaning column was created.